



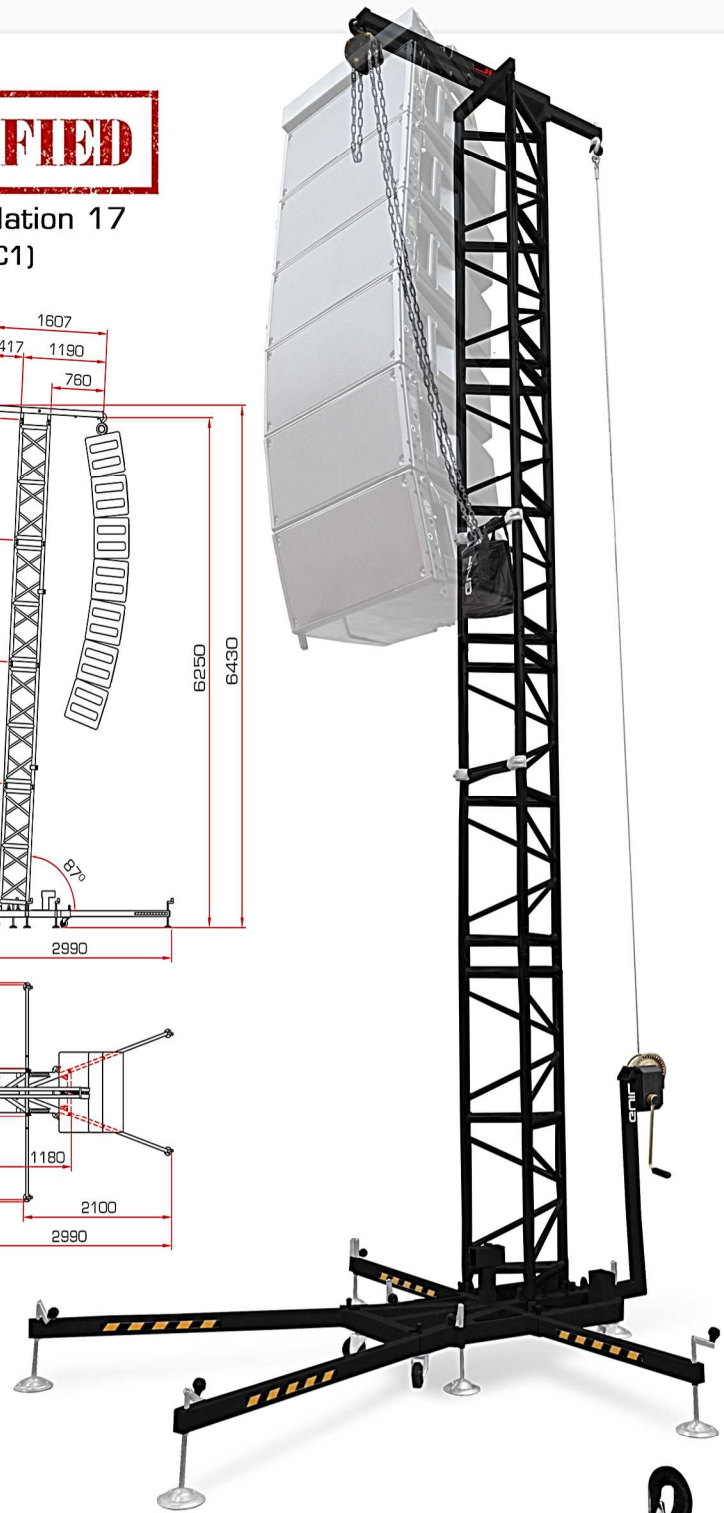
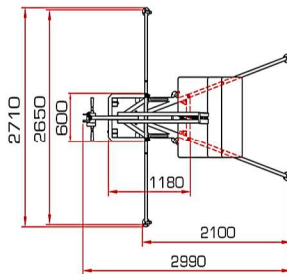
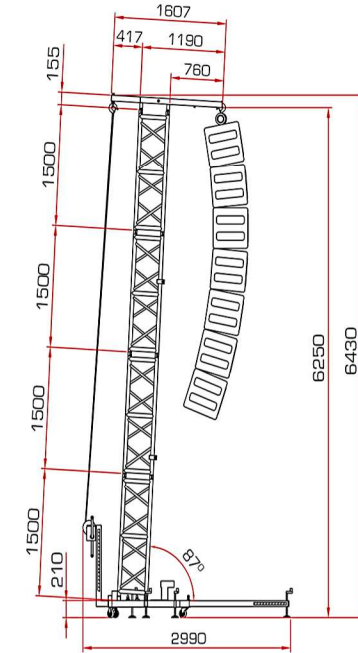
6.43 m
(21' 1.15")



DGUV Regulation 17
(Before BGV C1)



500 kg
(1102.3 lb)



ALL COMPONENTS INCLUDED:

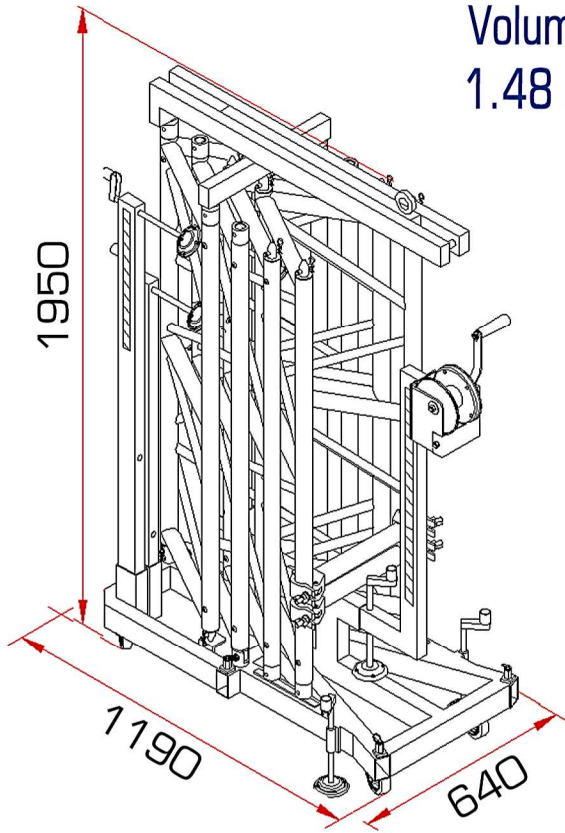
- > COMPLETE TOWER STRUCTURE
- > 2 TONNE CHAIN HOIST
- > CHAIN BAG
- > AUTO-BRAKE WINCH



**THE MOST PRACTICAL, COMPACT
& SAFE SOLUTION AT YOUR SERVICE !**



COMPACT DESIGN



Volume:
1.48 m³



TMD-545/N		TECHNICAL SPECIFICATIONS	
MAX. WORKING HEIGHT	6.25 m (20'6.06")	MAIN TUBES	MEASUREMENTS: 50 x 45 mm
MAX. OVERALL HEIGHT	6.43 m (21'1.15")		THICKNESS: 2.5 mm
MAXIMUM LOAD	500 kg (1102.3 lb)	BRACES	MEASUREMENTS: 25 x 19 mm
MAST SECTIONS	4 -TA500 (1500 mm)		THICKNESS: 3 mm
NET WEIGHT	190 kg (418.88 lb)	ALLOY	ALUMINIUM: EN-AW 6082 T6
BASE AREA	2.71 x 2.99 m		STEEL: ST37-2 (DIN 2393)
FOLDED DIMENSIONS	0.64 x 1.19 x 1.95 m (VOLUMEN: 1.48 m ³)		
COUPLING SYSTEM	CONICAL FEMALE COUPLERS WITH SPIGOTS AND SAFETY R-SPRINGS		
LIFTED BY	1 CHAIN HOIST: 2000 kg (CE) - 1 AUTO BRAKE WINCH		
COMPLIES WITH	• BGV C1 • 2006/42/CE • DIN 56921-11 • DIN 4113-2 • NBE EA-95 DBE-SE		

